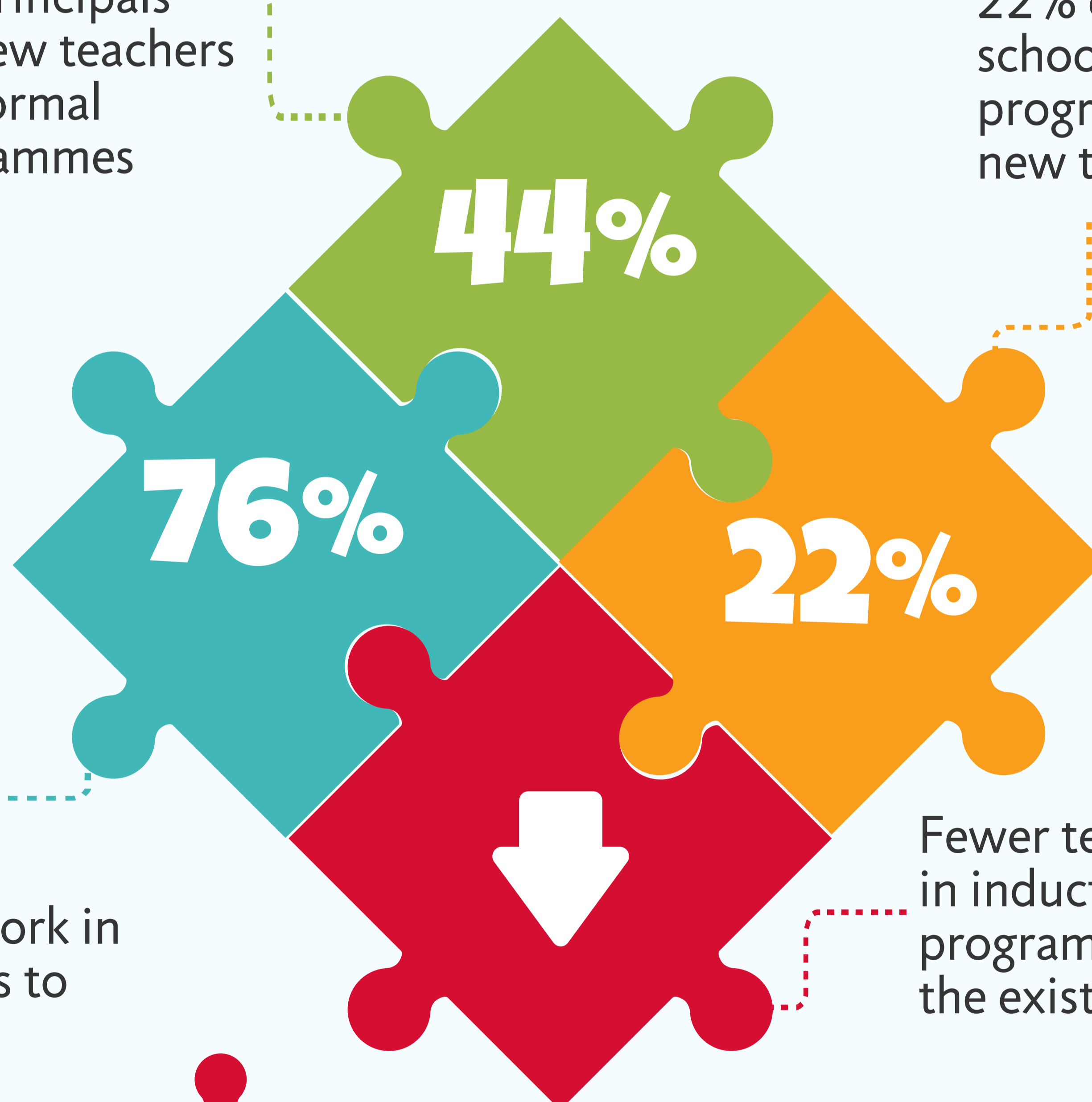


# MENTORING AND SUPPORT FOR NEW TEACHERS

The OECD's Teaching and Learning International Survey (TALIS) 2013 included an examination of the availability of support programmes for new teachers

44% of teachers work in schools where principals report that all new teachers have access to formal induction programmes

22% of teachers work in schools that only have programmes for teachers new to teaching



76% of teachers work in schools with access to informal induction

Fewer teachers report participation in induction and mentoring programmes than principals report the existence of such programmes

70% of teachers with less than 3 years' experience work in schools where principals report access to induction programmes, however only about 50% report participating in such programmes