

---

# **Industry, Employment, and Population Profile**

**Supporting Analysis: Gippsland Tertiary Education Plan**

**SV31032011**

---

**Submitted to Skills Victoria**

**By**

**Daniel Edwards, Paul Weldon and Tim Friedman**



**Australian Council for Educational Research**

ACN: 004 398 145; ABN: 19 004 398 145

June, 2011

---

**TABLE OF CONTENTS**

<b>1</b>	<b>Introduction .....</b>	<b>2</b>
1.1	Background .....	2
1.2	Focus of this document.....	2
1.3	Method and Approach.....	2
<b>2</b>	<b>Employment and industry profile .....</b>	<b>3</b>
2.1	Labour force status .....	3
2.2	Occupation.....	5
2.3	Industry of employment .....	6
2.4	Qualifications of employed people.....	7
2.5	Income .....	8
2.6	Location of work .....	10
<b>3</b>	<b>Population Profile .....</b>	<b>11</b>
3.1	Gippsland 2006.....	11
3.2	Gippsland in the future .....	13
<b>4</b>	<b>Labour Force Projections .....</b>	<b>15</b>
4.1	Overall size.....	15
4.2	Qualification levels of workforce.....	15
4.3	Workforce change by Industry .....	16
<b>5</b>	<b>Conclusion .....</b>	<b>18</b>
	<b>Appendix.....</b>	<b>19</b>

## 1 INTRODUCTION

### 1.1 Background

There is considerable interest in the provision and access to tertiary education within the Victoria by the State Government. In 2010, a Tertiary Education Plan was released by the Government, detailing various targets and policy objectives in this sector. Despite a change of Government, the broad objectives in the plan continue to be pursued. As such, a number of more specific plans, based on geographic locations within Victoria are being constructed. One such plan is being constructed for Gippsland. An Expert Panel has been formed to create the plan for Gippsland, chaired by Professor Kwong Lee Dow.

This document provides supporting analysis for the Expert Panel to use in the formation of the Gippsland Tertiary Education Plan. Specifically, this document provides the **Draft Findings** relating to the analysis of industry, employment and population in Gippsland. Other analyses in this project, including a student cohort analysis, and the modelling of tertiary education demand will be provided in subsequent documents for this project.

### 1.2 Focus of this document

As noted above, this document provides one part of the wider analysis being undertaken for the Expert Panel. Overall, the work in this document examines:

- Occupation and employment characteristics;
- industry profiles;
- demographic profiles and change; and
- projected employment and industry change over the coming years.

For the purpose of this project, Gippsland is divided into 6 Local Government Areas. These are Baw-Baw, Bass Coast, East Gippsland, La Trobe City, South Gippsland and Wellington. In many of the main tables in this document, these 6 LGAs are aggregated for comparison with Melbourne and Victorian totals. Some of the more detailed tables and analyses of individual LGAs are contained in the Appendix of this document.

The document primarily contains data with brief comments included where necessary. The purpose of this document is to provide raw figures and basic overall analysis in order to inform the Expert Panel creating the Gippsland Tertiary Education Plan. Detailed written description or analysis is not the purpose or aim of this work.

### 1.3 Method and Approach

The analyses in this document utilise a number of datasets. These are outlined below:

- ABS Census for 1996, 2001 and 2006 – most tables in this document have been extracted from the Census product *Table Builder*.
- Population projections for Victoria calculated by the Victorian DPCD. On the advice of DPCD minor alteration of the projection figures for the Latrobe LGA have been imputed by ACER. Detail of this change will be provided in the final report of this project.
- MONASH Model Labour Market forecasts, calculated and maintained by the Centre of Policy Studies, Monash University. Further detail about the projections and this collection is available at: <http://www.monash.edu.au/policy/monmod.htm>

Further to this, some background documentation provided by Skills Victoria has been reviewed by the project team in order to provide context to the execution of this project. These documents have included the *Gippsland Regional Skills Forum Skills Action Plan* (December 2009) and a document prepared for the Department of Treasury and Finance relating to the Latrobe Valley titled *Carbon Pollution Reduction Scheme: Adjustment Strategy for Latrobe Valley*.

The analysis in this report has followed the following approach:

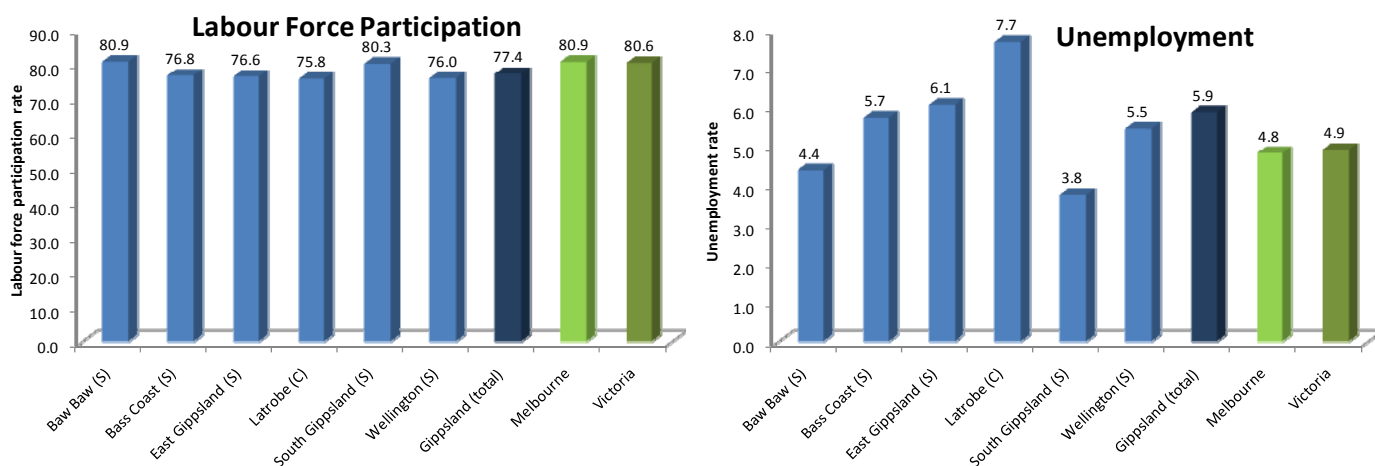
1. Explored existing work collated in this area provided by Skills Victoria.
2. Collate available data for current situation, from ABS Census and DPCD population projections.
3. Specified variables and table format for Centre of Policy Studies to provide MONASH Model projection data for employment demand.
4. Examined Census data to build Gippsland profile.
5. Analysed MONASH Model data and arranged to a level practical for dissemination.
6. Created tables and figures to provide a profile of the employment, industry and population in Gippsland and its 6 LGAs.

## 2 EMPLOYMENT AND INDUSTRY PROFILE

The figures and tables below provide a snapshot of the labour force, industry profile and characteristics of the Gippsland population.

### 2.1 Labour force status

Figure 1 shows the rates of Labour Force Participation and unemployment within the Gippsland LGAs as measured in the 2006 Census. The base population used here are persons aged from 20 to 59 years. Comparator data is provided for Melbourne and Victoria as a whole. For Gippsland as a whole, participation in the labour force is slightly below the Victorian figure and unemployment slightly above. However, there is variation among the LGAs in Gippsland on both these measures.



**Figure 1: Labour force status and unemployment rates, persons aged 20 to 59, Gippsland LGAs, Melbourne and Victoria, 2006**

Source: ABS Census 2006, unpublished (Table Builder)

Table 1 provides the actual numbers and more detailed figures for employed and unemployed persons by LGA.

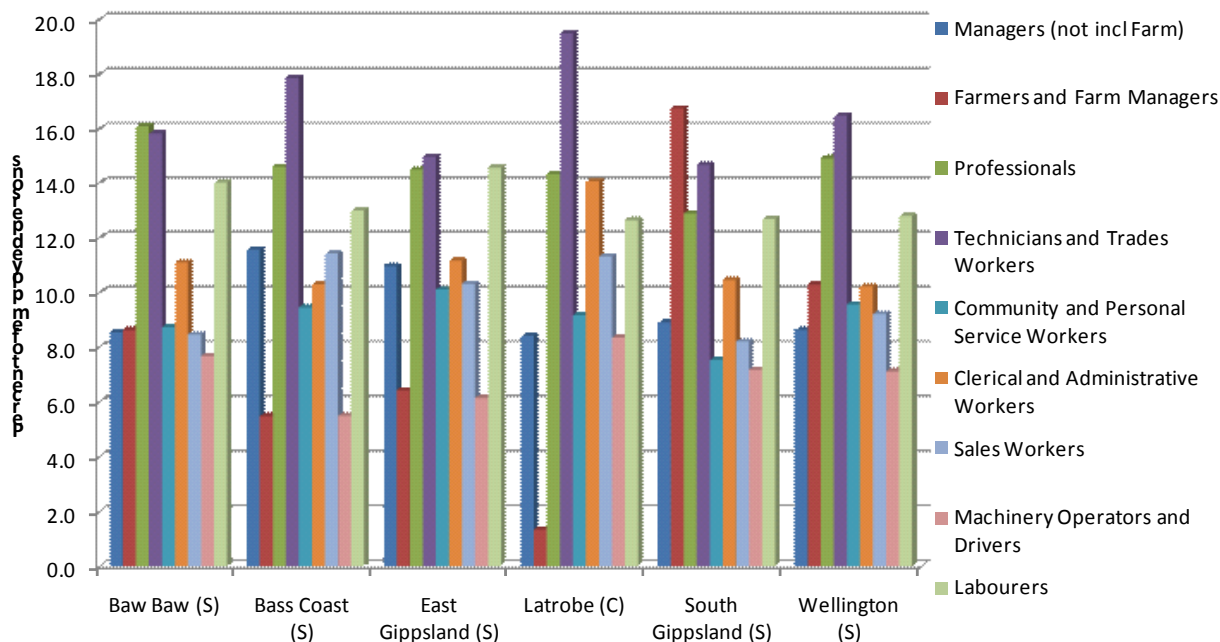
**Table 1: Labour Force Status, Gippsland residents aged 20 to 59 years, 2006**

Labour Force Status	Baw Baw (S)	Bass Coast (S)	East Gippsland (S)	Latrobe (C)	South Gippsland (S)	Wellington (S)	Gippsland (total)	Melbourne	Victoria
<b>Employed, worked full-time</b>	8,975	4,876	7,739	15,698	5,873	9,311	52,472	1,011,819	1,333,843
<b>Employed, worked part-time</b>	4,147	2,864	4,306	7,099	2,814	4,063	25,293	388,537	531,935
<b>Employed, away from work</b>	888	573	955	1,596	630	991	5,633	88,333	120,683
<b>Unemployed, looking for full-time work</b>	430	347	596	1,512	247	593	3,725	49,095	68,010
<b>Unemployed, looking for part-time work</b>	213	160	245	521	118	239	1,496	26,614	34,999
<b>Not in the labour force</b>	3,457	2,661	4,237	8,423	2,368	4,794	25,940	369,988	503,419
<b>Total</b>	18,110	11,481	18,078	34,849	12,050	19,991	114,559	1,934,386	2,592,889

Source: ABS Census 2006, unpublished (*Table Builder*)

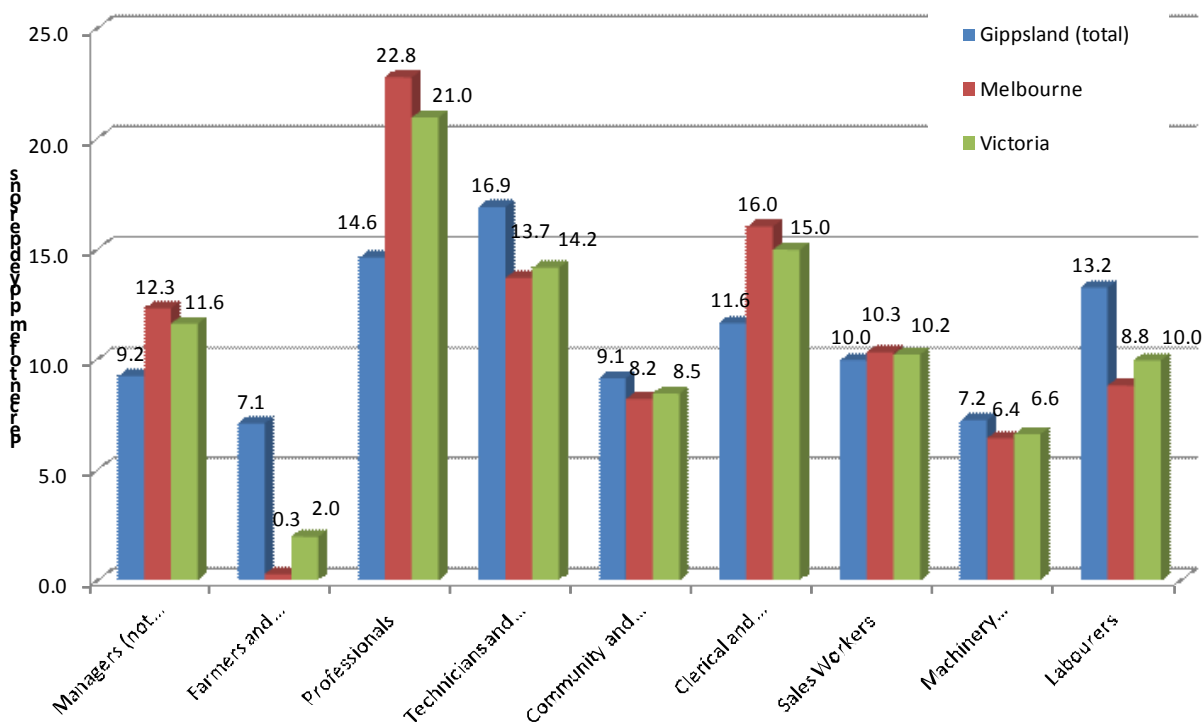
## 2.2 Occupation

Figure 2 and Figure 3 provide information about the broad occupational categories that Gippsland residents work. Within the ‘Managers’ category, ‘Farmers and Farm Managers’ been given a specific category due to its relevance to the region. Detailed tables containing the numbers in these figures are in Appendix Table 6.



**Figure 2: Distribution of broad occupational categories among employed Gippsland residents, 2006**

Source: ABS Census 2006, unpublished (Table Builder)

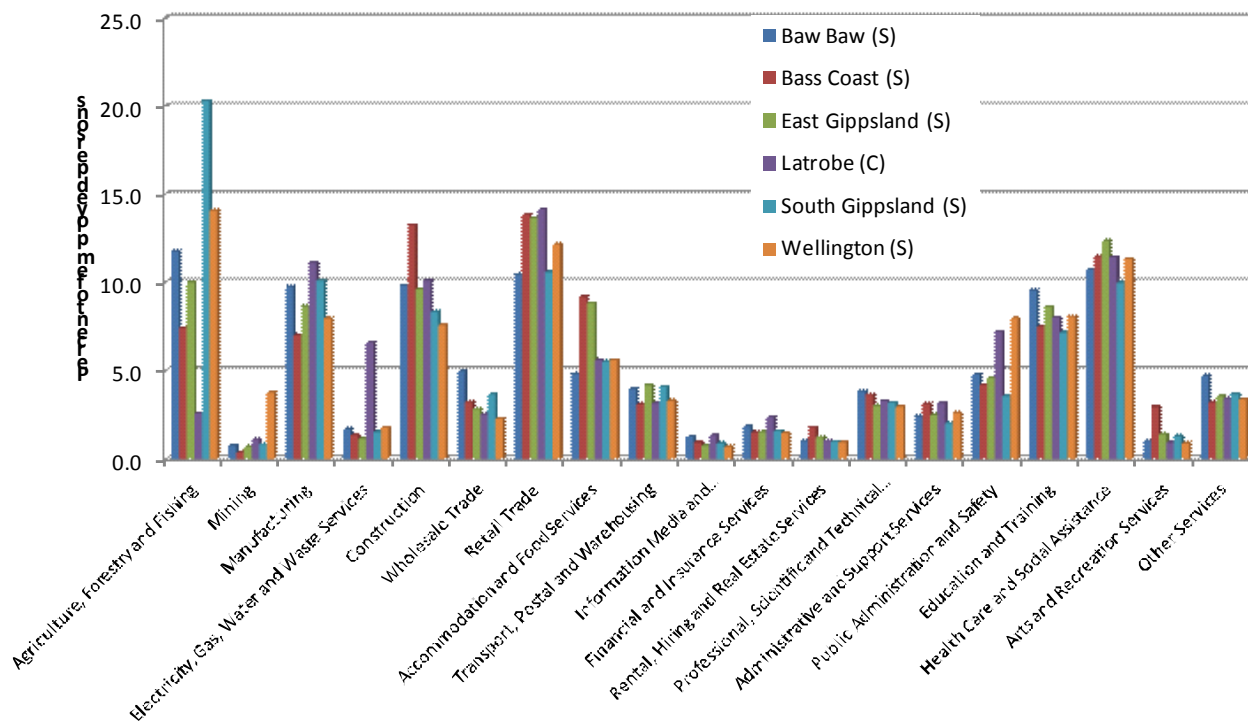


**Figure 3: Distribution of broad occupational categories Gippsland, Melbourne and Victorian residents, 2006**

Source: ABS Census 2006, unpublished (Table Builder)

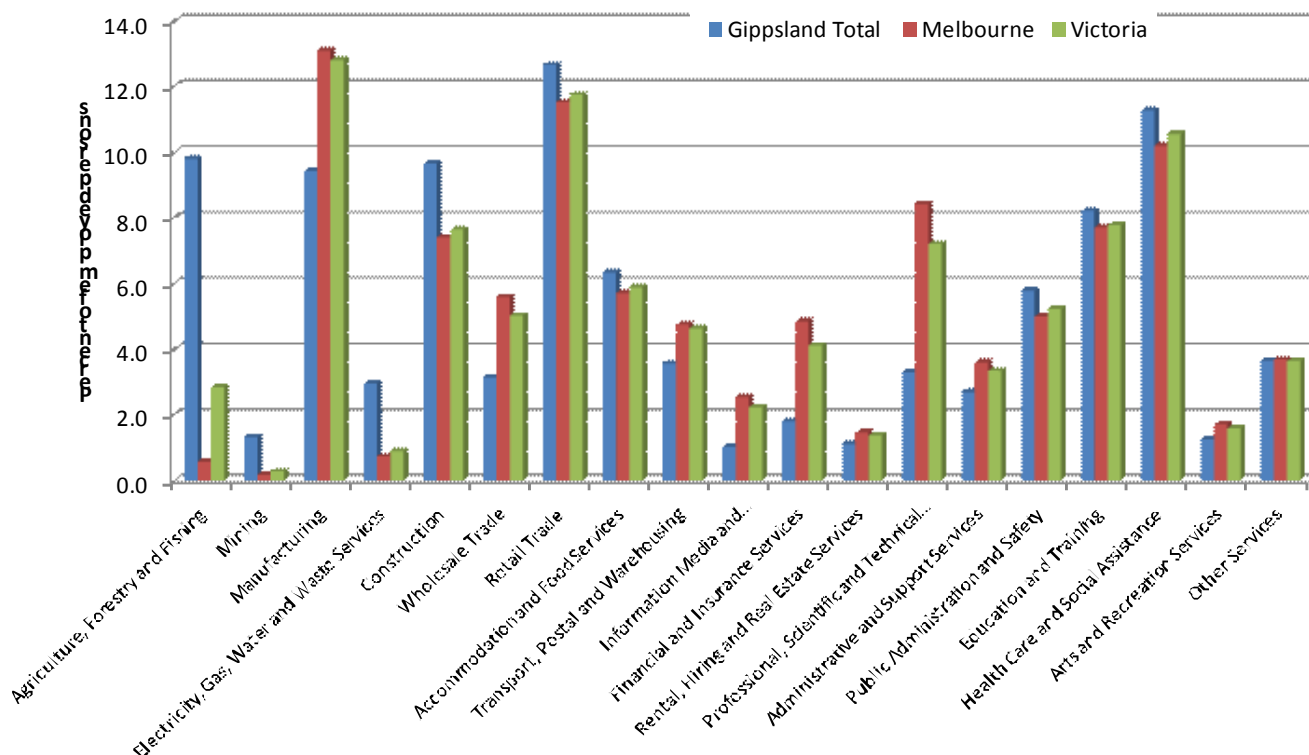
### 2.3 Industry of employment

Figure 4 and Figure 5 show the distribution of employed persons by industry for the Gippsland LGAs and for Melbourne and Victoria. These figures help to highlight the diversity of industries serving the area. As shown in Figure 5 the largest industries by employees in the region during 2006 were Retail Trade, Health Care, Agriculture, Construction and Manufacturing. However, there is notable variation within the Gippsland LGAs in this regard. Detailed figures are contained in the Appendix (Table 7).



**Figure 4: Distribution of broad industry categories among employed Gippsland residents, 2006**

Source: ABS Census 2006, unpublished (Table Builder)



**Figure 5: Distribution of broad industry categories Gippsland, Melbourne and Victorian residents, 2006**

Source: ABS Census 2006, unpublished (Table Builder)

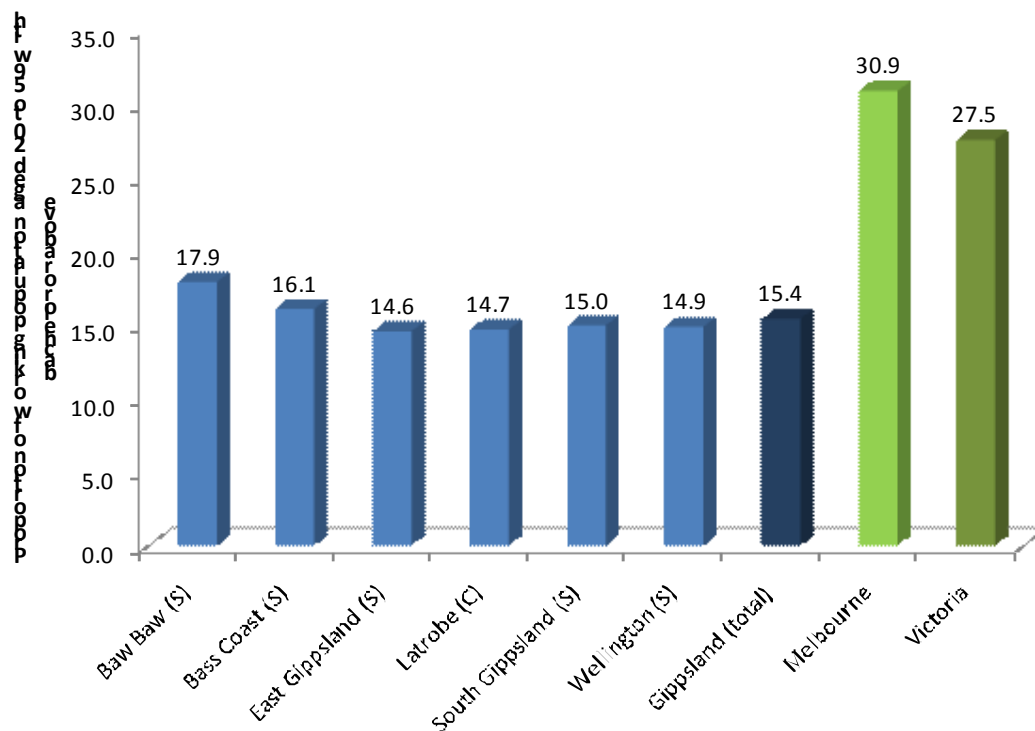
## 2.4 Qualifications of employed people

Qualification levels of employed people in Gippsland are generally much lower than those for Melbourne and Victoria. Figure 6 highlights the massive disparity in relation to the proportion of employed people who hold a bachelor degree or above among the age group 20 to 59. The Melbourne figure (30.9 per cent) is twice that of the average for Gippsland (15.4 per cent).

Table 2 provides more detailed figures relating to this breakdown. It shows a much larger proportion of the workforce possessing a Certificate level qualification as their highest than is the case for the Melbourne and Victorian averages. While there is also a larger proportion of employed persons with no post-school qualifications in Gippsland, the difference between this area is not as profound as was the case among the higher degrees.

These figures are particularly important for any consideration of tertiary education needs in the Gippsland area. Further analysis in this regard is carried out later in this document in regards to forecasts for future employment and qualification profiles in the area.





**Figure 6: Proportion of employed people aged 20 to 59 with a bachelor degree or above, Gippsland LGAs, Melbourne and Victoria, 2006**

Source: ABS Census 2006, unpublished (Table Builder)

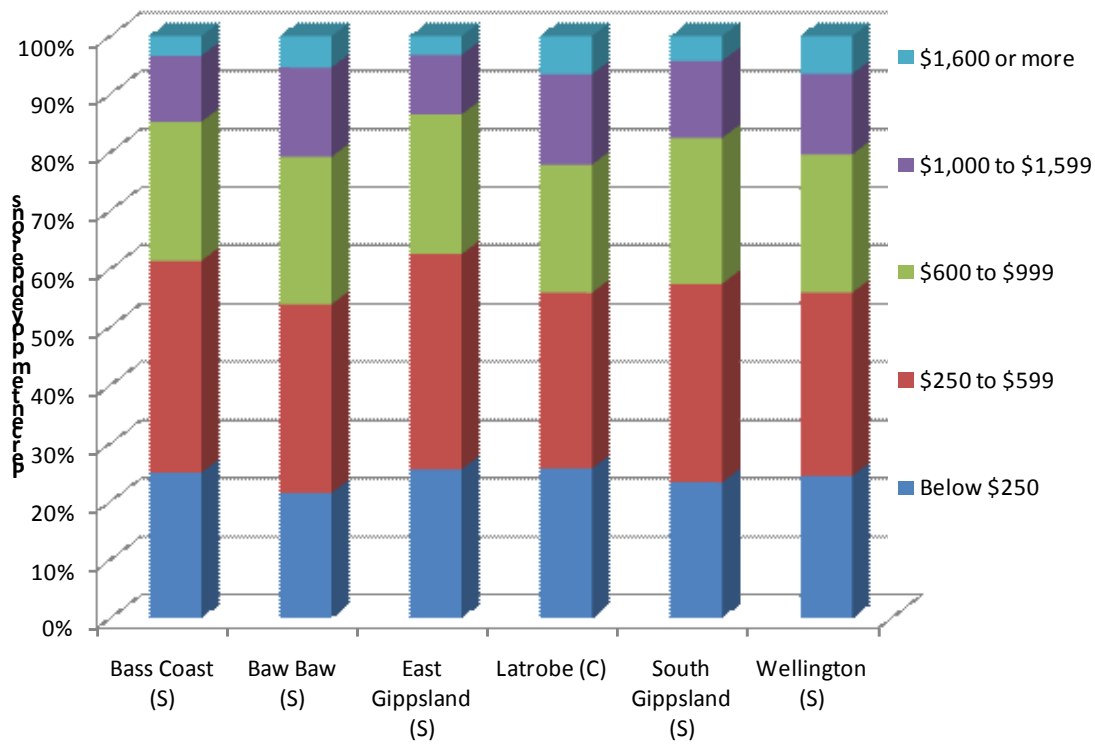
**Table 2: Level of highest qualification among employed persons aged 20 to 59, Gippsland LGAs, Melbourne and Victoria, 2006 (% distribution)**

	Postgraduate Degree Level	Graduate Diploma and Graduate Certificate Level	Bachelor Degree Level	Advanced Diploma and Diploma Level	Certificate Level	Level of education inadequately described	No non-school qualification	Total
<b>Baw Baw (S)</b>	2.0	2.7	13.2	8.7	30.4	1.5	41.4	100.0
<b>Bass Coast (S)</b>	1.7	2.5	11.9	8.2	30.6	1.8	43.4	100.0
<b>East Gippsland (S)</b>	1.3	2.3	10.9	8.9	29.3	1.6	45.6	100.0
<b>Latrobe (C)</b>	1.6	1.9	11.2	7.9	33.2	1.6	42.6	100.0
<b>South Gippsland (S)</b>	1.3	2.6	11.1	8.2	29.9	1.2	45.8	100.0
<b>Wellington (S)</b>	1.2	2.1	11.5	7.9	31.0	1.7	44.5	100.0
<b>Gippsland (total)</b>	1.5	2.3	11.6	8.3	31.1	1.6	43.6	100.0
<b>Melbourne</b>	5.1	3.2	22.5	10.4	19.4	1.6	37.7	100.0
<b>Victoria</b>	4.3	3.1	20.2	10.0	21.6	1.6	39.3	100.0

Source: ABS Census 2006, unpublished (Table Builder)

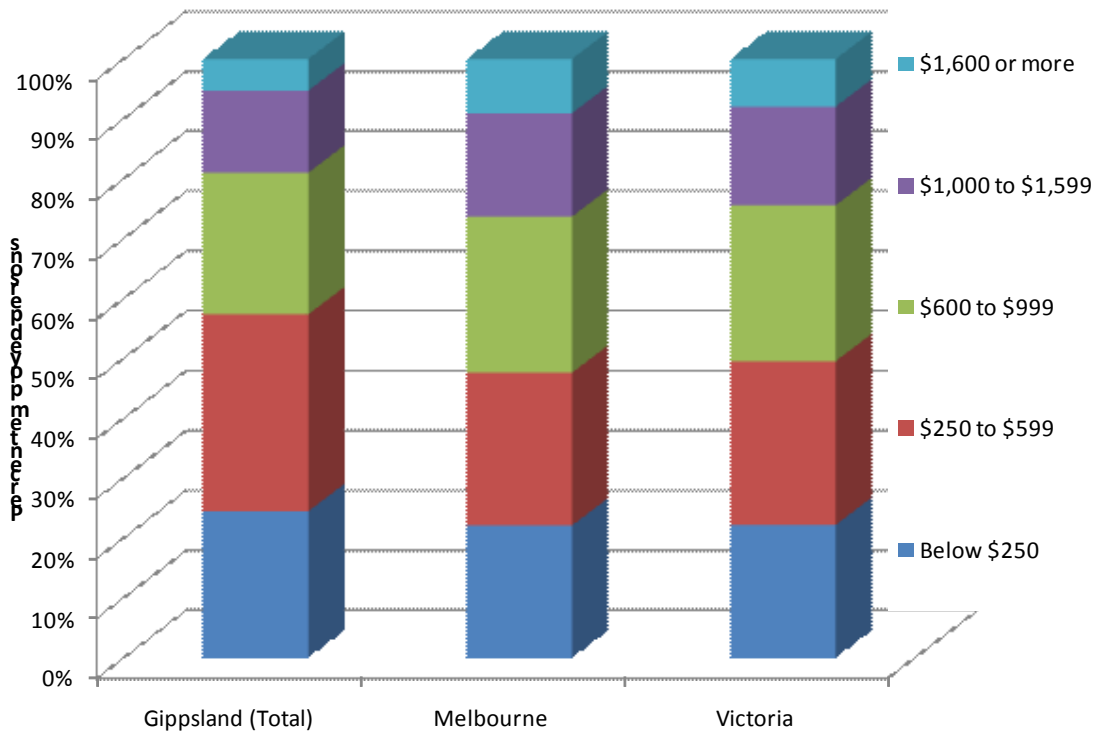
## 2.5 Income

Figure 7 and Figure 8 provide an indication of relative weekly income of employed Gippsland residents aged between 20 and 59 alongside comparative figures for Melbourne and Victoria. Within the Gippsland LGAs there are interesting differences. Compared with the state and capital city figures, those employed and residing in Gippsland are more likely to be in the lower income brackets. Actual numbers behind these figures are in the Appendix (Table 8).



**Figure 7: Weekly income distribution among employed Gippsland residents aged 20 to 59, by LGA, 2006**

Source: ABS Census 2006, unpublished (*Table Builder*)

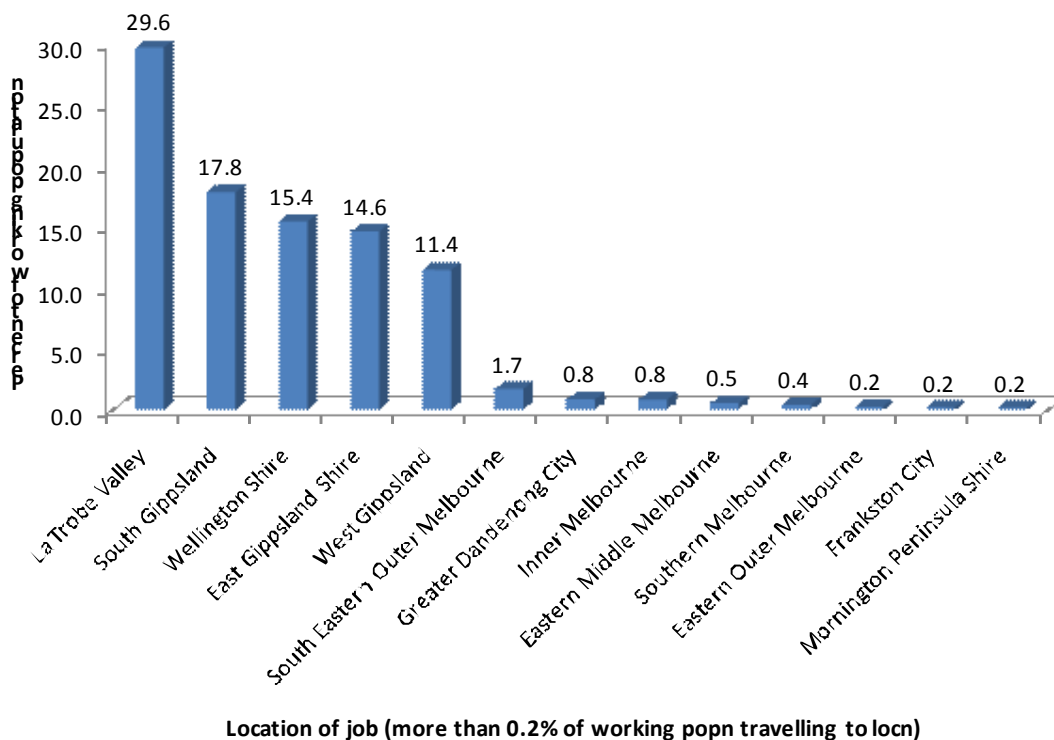


**Figure 8: Weekly income distribution among employed residents aged 20 to 59, Gippsland, Melbourne and Victoria, 2006**

Source: ABS Census 2006, unpublished (*Table Builder*)

## 2.6 Location of work

In general, Census figures show that most employed people residing in Gippsland also work in the region. Overall 86 per cent of working people living in Gippsland also work somewhere in the region, with almost one third employed in the Latrobe Valley. Figure 9 shows the most popular regions of work for these residents. Outside of Gippsland, the Melbourne areas in closest proximity to Gippsland – the outer south eastern suburbs and Dandenong attract a small but notable number of people. A small proportion of Gippsland residents are also shown here to be travelling into inner Melbourne for work. Detailed figures are in Table 9 of the Appendix.



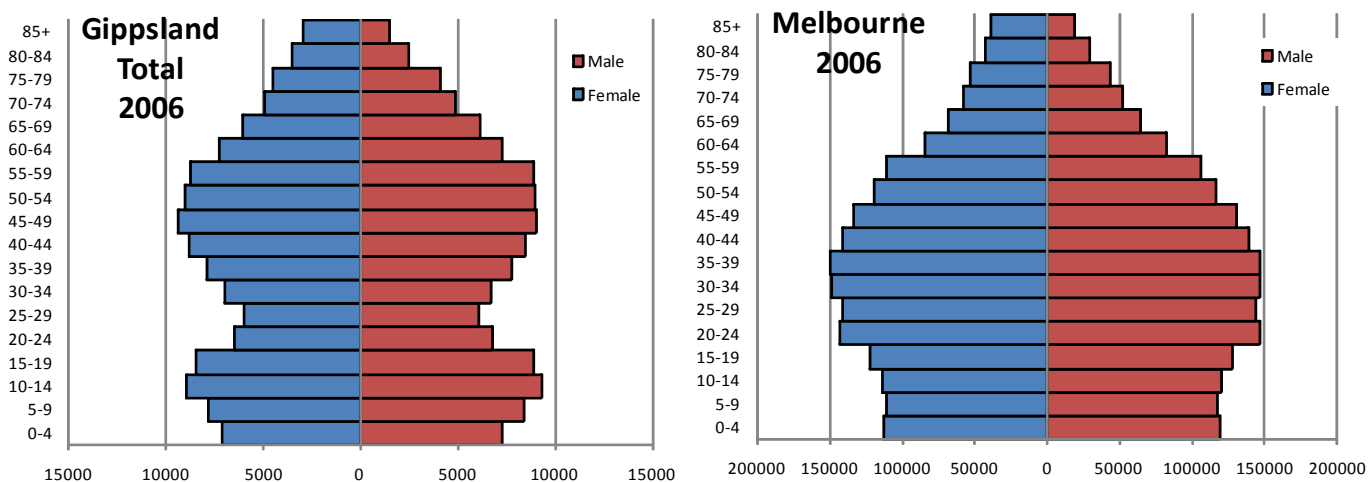
**Figure 9: Employed Gippsland residents by location of employment (Statistical Subdivision), 2006 (%)**

Source: ABS Census 2006, unpublished (Table Builder)

### 3 POPULATION PROFILE

#### 3.1 Gippsland 2006

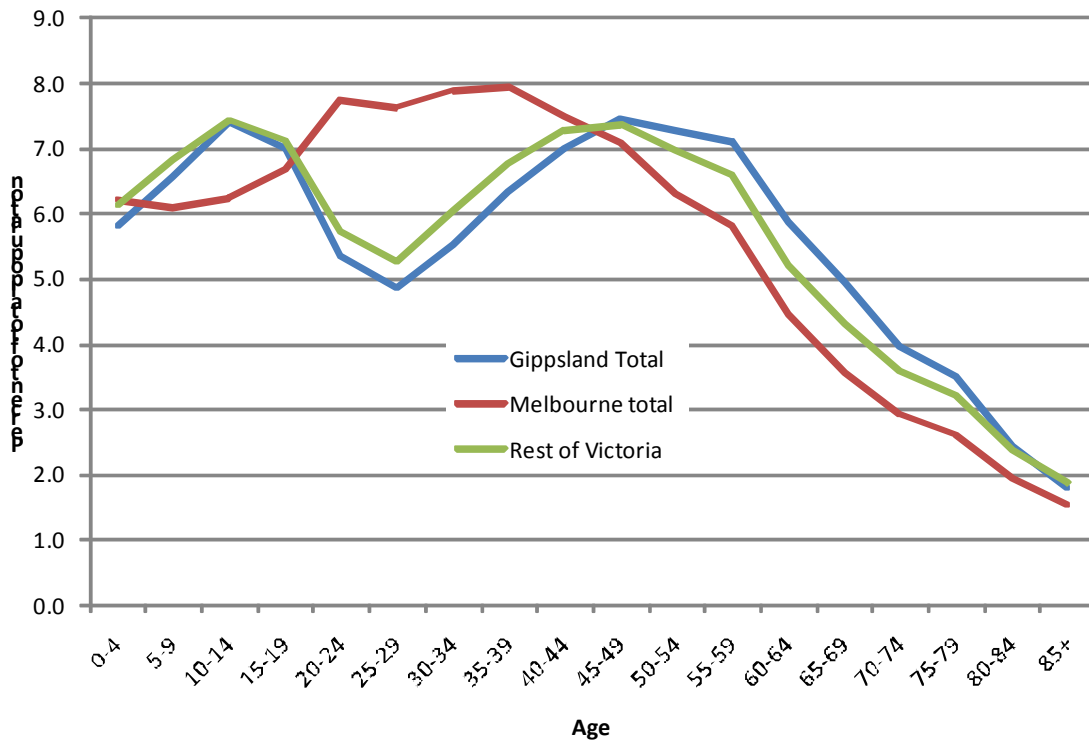
In 2006 there were just under 250,000 people residing in the Gippsland region. The left side of Figure 10 shows the distribution of this population for both males and females. On the right of this figure is a comparison of the population shape of Melbourne. Population pyramids for each Gippsland LGA are shown in the Appendix (Figure 20).



**Figure 10: Population distribution of Gippsland and Melbourne, 2006**

Source: Victoria in the Future 2008, Population projections DPCD (amended by ACER)

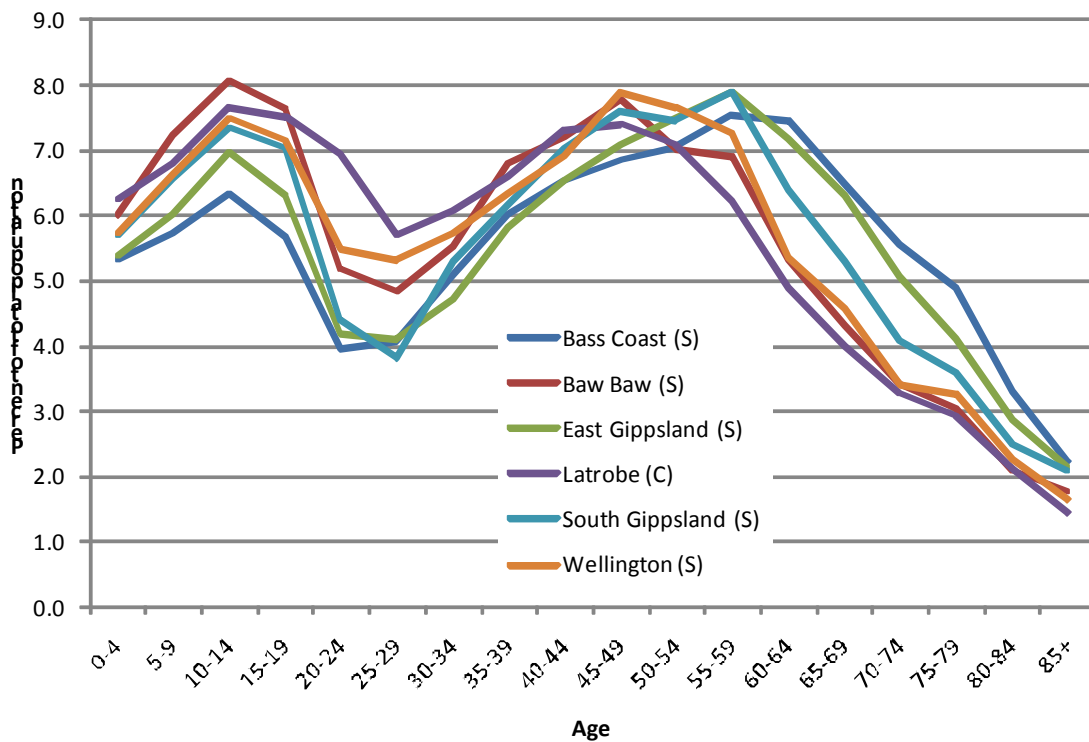
The most important facet of the population pyramids for Gippsland when compared with Melbourne is the dearth of numbers in the 20 to 40 year age groups in the Gippsland figures. The difference is highlighted in Figure 11, which charts the age distributions of the Gippsland and the Melbourne populations in 2006. The stark reality shown here is that Gippsland has a dramatic decline in the number of people aged between 20 and 40. This pattern is seen in other areas of Victoria and regional Victoria as illustrated in the figure, but appears to be more pronounced in Gippsland.



**Figure 11: Age distribution for Gippsland, Melbourne and the rest of Victoria, 2006**

Source: Victoria in the Future 2008, Population projections DPCD (amended by ACER)

The individual age distribution figures for each of the Gippsland LGAs are displayed in Figure 12. They show that this pattern of decline in these age groups exists in all Gippsland areas, although some are more pronounced than others.



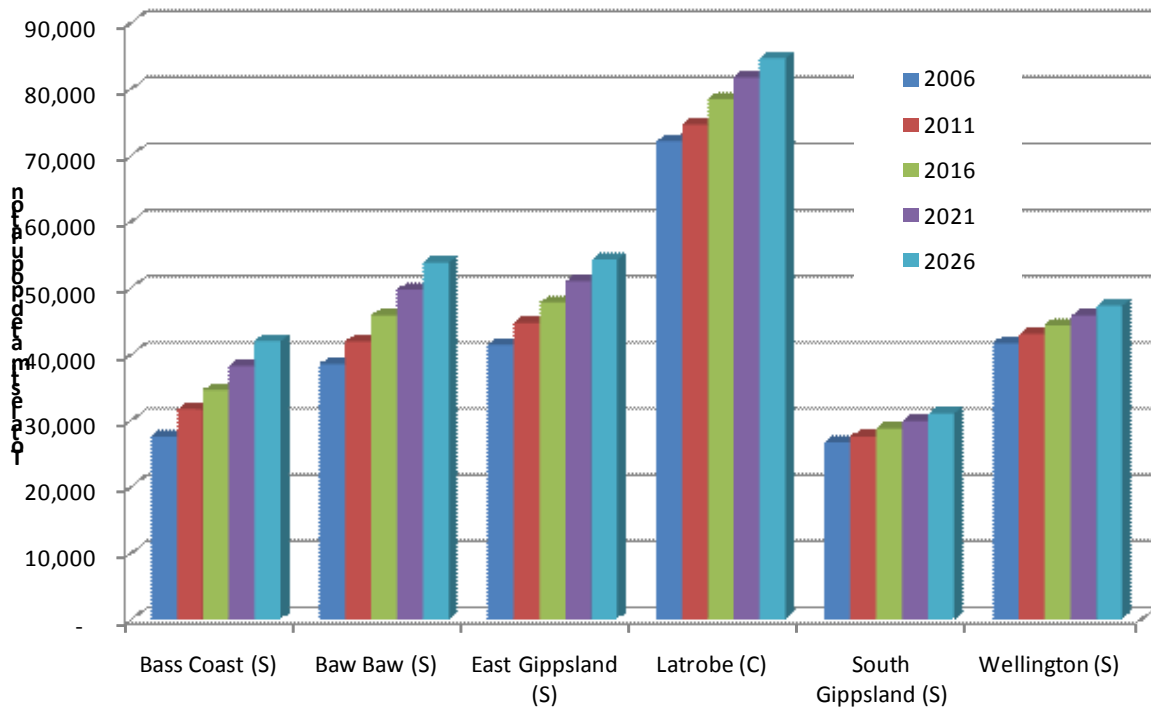
**Figure 12: Age distribution for Gippsland LGAs, 2006**

Source: Victoria in the Future 2008, Population projections DPCD (amended by ACER)

### 3.2 Gippsland in the future

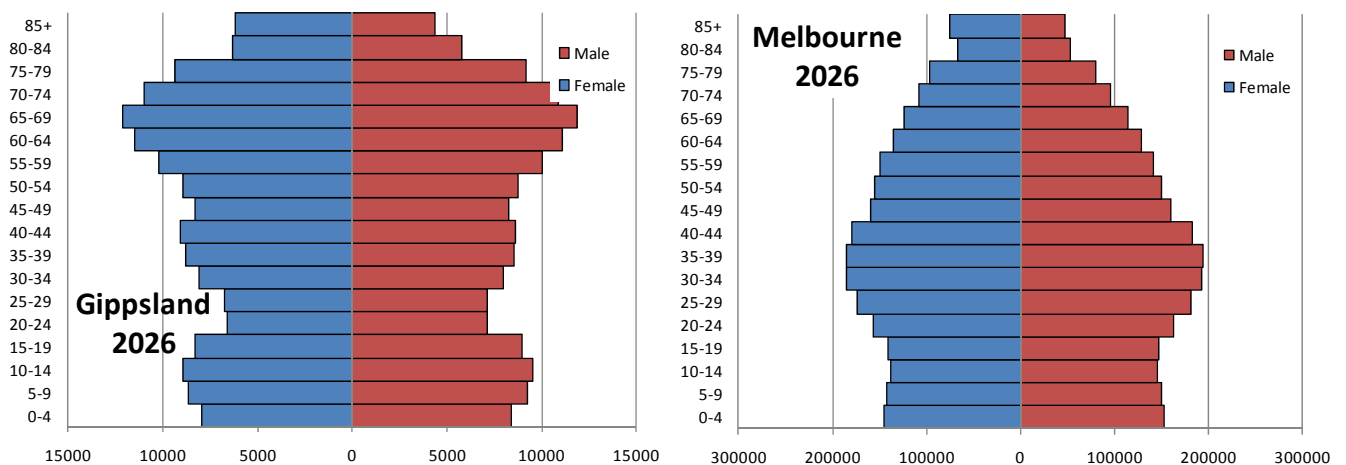
Figures from the DPCD help to chart the projected population growth and change in Gippsland over the coming fifteen years. Estimates suggest growth in the overall population of each LGA between 2006 and 2026 as shown in Figure 13. Growth is also projected for the Melbourne metropolitan area and for Victoria as a whole. Full figures are available in Appendix Table 10.

Population distributions for Gippsland and Melbourne in 2026 show distinctly different ‘shaped’ population for these two areas, with a ‘top heavy’ Gippsland showing an over representation of older people in the Gippsland population. Population pyramids for the Gippsland region LGAs are included in the Appendix (Figure 21).



**Figure 13: Total population change projected for Gippsland LGAs, 2006 to 2026**

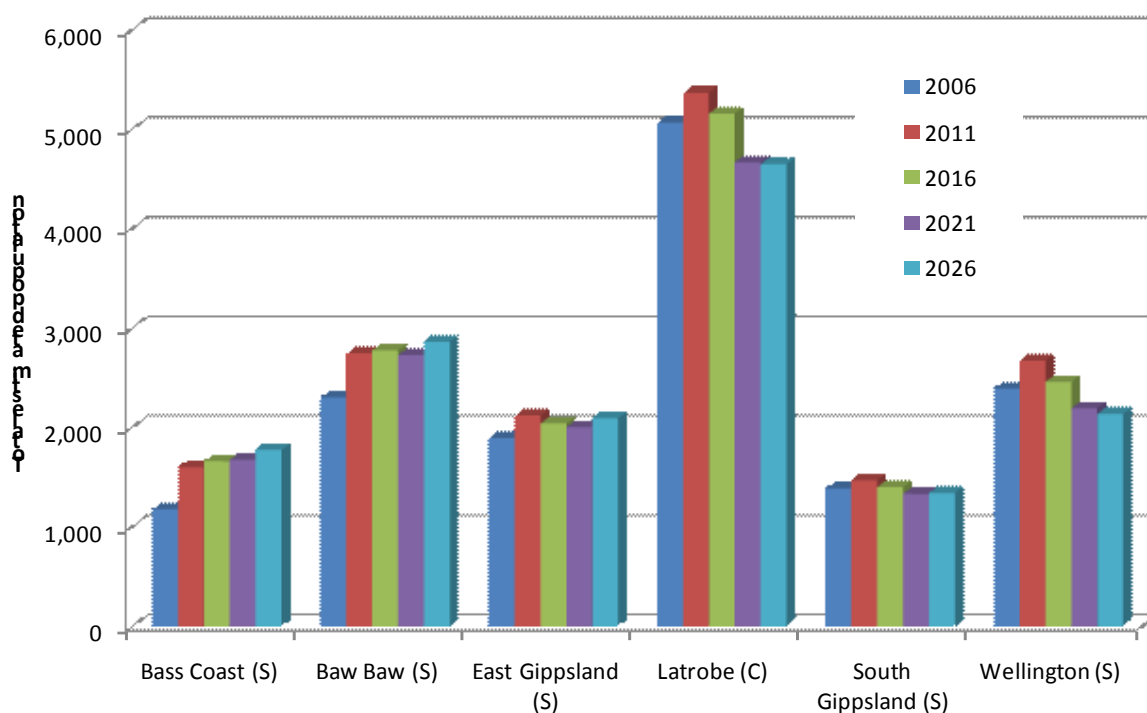
Source: Victoria in the Future 2008, Population projections DPCD (amended by ACER)



**Figure 14: Population distribution of Gippsland and Melbourne, 2026**

Examination of population figures pertinent to the tertiary age cohort, a different scenario exists, that warrants careful consideration for estimates of demand for tertiary education in the future (which will be carried out in a subsequent part of this project). Projections for the 18 to 22 year cohort in Gippsland to 2026 chart a decline rather than a rise in population numbers. Table 3 details this change, showing that from an expected peak of nearly 16,000 18 to 22 year olds in 2011, the numbers in this age group are projected to decline to about 14,800 by 2026. By contrast, the Melbourne figures for this age group are expected to continue to grow over this period, while Victorian total numbers are also projected to experience a rise.

These are important implications that the Gippsland Tertiary Education Plan must consider. Further discussion in this regard is included in subsequent documents, charting potential changes in tertiary education demand.



**Figure 15: Population aged 18 to 22 years old - change projected for Gippsland LGAs, 2006 to 2026**

Source: Victoria in the Future 2008, Population projections DPCD (amended by ACER)

**Table 3: Projected population numbers for 18 to 22 year olds, Gippsland LGAs, Melbourne and Victoria**

LGA	2006	2011	2016	2021	2026
Bass Coast (S)	1,176	1,597	1,657	1,671	1,772
Baw Baw (S)	2,301	2,744	2,774	2,724	2,860
East Gippsland (S)	1,893	2,117	2,037	2,001	2,092
Latrobe (C)	5,065	5,363	5,154	4,665	4,645
South Gippsland (S)	1,382	1,466	1,397	1,329	1,338
Wellington (S)	2,390	2,667	2,456	2,191	2,133
<b>Gippsland Total</b>	<b>14,207</b>	<b>15,955</b>	<b>15,475</b>	<b>14,581</b>	<b>14,841</b>
<b>Melbourne</b>	<b>277,346</b>	<b>288,911</b>	<b>288,791</b>	<b>290,301</b>	<b>306,676</b>
<b>Victoria</b>	<b>361,484</b>	<b>384,702</b>	<b>383,831</b>	<b>381,566</b>	<b>399,737</b>

Source: Victoria in the Future 2008, Population projections DPCD (amended by ACER)

## 4 LABOUR FORCE PROJECTIONS

As noted in the introduction, projections of the future labour force in Gippsland have been calculated using the MONASH Model designed and maintained by the Centre of Policy Studies at Monash University. This data forecasts changes in the labour force from the 2009-10 financial year to 2017-18. The outcomes of this modelling are displayed in the tables and charts below, with detailed data provided in the Appendix of this document.

Estimates in this section are aggregated by Statistical Division rather than LGA. Gippsland is divided into two Statistical Divisions – East Gippsland (LGAs of East Gippsland and Wellington) and Gippsland (comprising LGAs, Bass Coast, Baw Baw, Latrobe, and South Gippsland)

### 4.1 Overall size

As shown in Table 4, the workforce in Gippsland is projected in the MONASH figures to grow by 24 per cent over the 9 year period in this time series. Growth rates are expected to be relatively even in both the East Gippsland SD and the Gippsland SD. While working off much smaller base, the rate of change for Gippsland is projected to be larger than for Melbourne as a whole.

**Table 4: Projected workforce size, 2009-10 to 2017-18 selected areas**

	East Gippsland SD	Gippsland SD	Gippsland Total	Melbourne
<b>2009-10</b>	39,100	79,420	118,520	2,028,900
<b>2010-11</b>	47,310	87,470	134,780	2,091,600
<b>2011-12</b>	47,650	87,580	135,230	2,125,200
<b>2012-13</b>	48,340	91,000	139,340	2,193,700
<b>2013-14</b>	48,550	92,800	141,350	2,231,200
<b>2014-15</b>	48,710	93,810	142,520	2,251,900
<b>2015-16</b>	48,880	95,090	143,970	2,277,500
<b>2016-17</b>	48,800	96,530	145,330	2,308,800
<b>2017-18</b>	48,740	97,940	146,680	2,330,900
<b>Change no.</b>	9,640	18,520	28,160	302,000
<b>Change %</b>	24.7	23.3	23.8	14.9

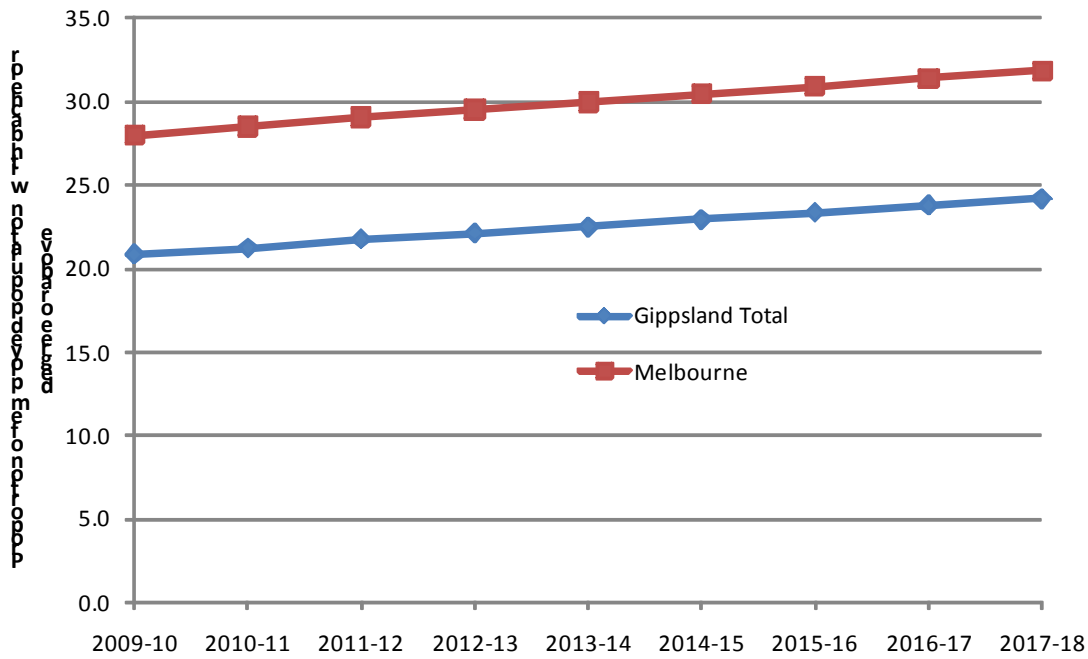
Source: MONASH Model, CoPS, Monash University

### 4.2 Qualification levels of workforce

Detailed tables charting projected qualification levels of the Gippsland workforce are contained in the Appendix (Table 11). A more specific analysis of those figures is contained in the body of this report below.

In terms of a university-qualified workforce, the figures earlier in this document have shown that Gippsland has a less qualified employment profile than that of Melbourne. Projection figures suggest that this differentiation in qualification levels will continue into the future. This is displayed in Figure 16, which shows that while the proportion of workers with university-level qualifications in Gippsland will increase over this time, the trajectory is not as steep as that for Melbourne. By 2018, 24 per cent of the Gippsland working population is expected to have a bachelor level qualification or above, compared with 32 per cent for Melbourne.

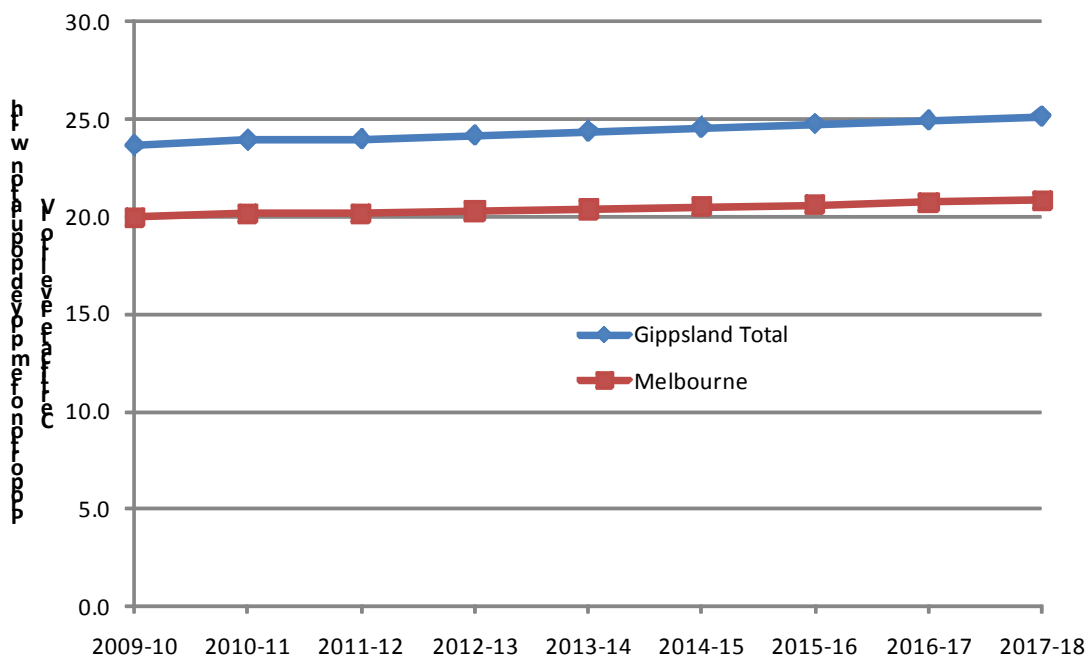




**Figure 16: Proportion of working population holding a bachelor level or above, projections 2009-10 to 2017-18**

Source: MONASH Model, CoPS, Monash University

The inverse of Figure 16 is present in Figure 17 which charts the concentrations within the workforce of people with a Certificate qualification (levels I to IV).



**Figure 17: Proportion of working population holding a Certificate Level I to IV qualification, projections 2009-10 to 2017-18**

Source: MONASH Model, CoPS, Monash University

### 4.3 Workforce change by Industry

Figure 18 and Figure 19 chart the projected sizes of industries in Gippsland. Detailed information relating to these figures is contained in Table 5. Figure 18 shows the growth trajectories over the

2009-10 to 2017-18 period, while Figure 19 simply shows the first and last years of this timeseries. Of the larger industries in the region, notable growth is apparent in Education and Training and in Health Services. The only industry forecast to decline in size in the region is Manufacturing.

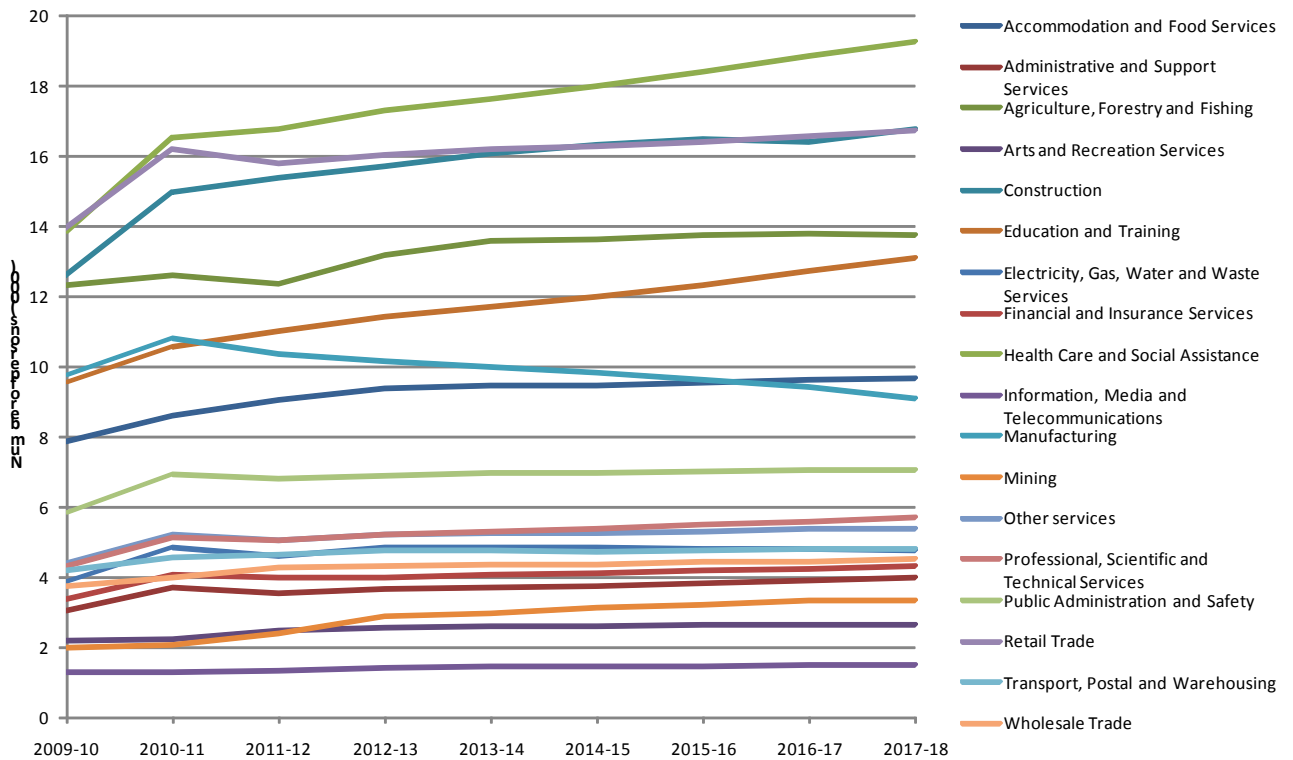


Figure 18: Projected numbers of workers in Gippsland by industry, 2009-10 to 2017-18 ('000s)

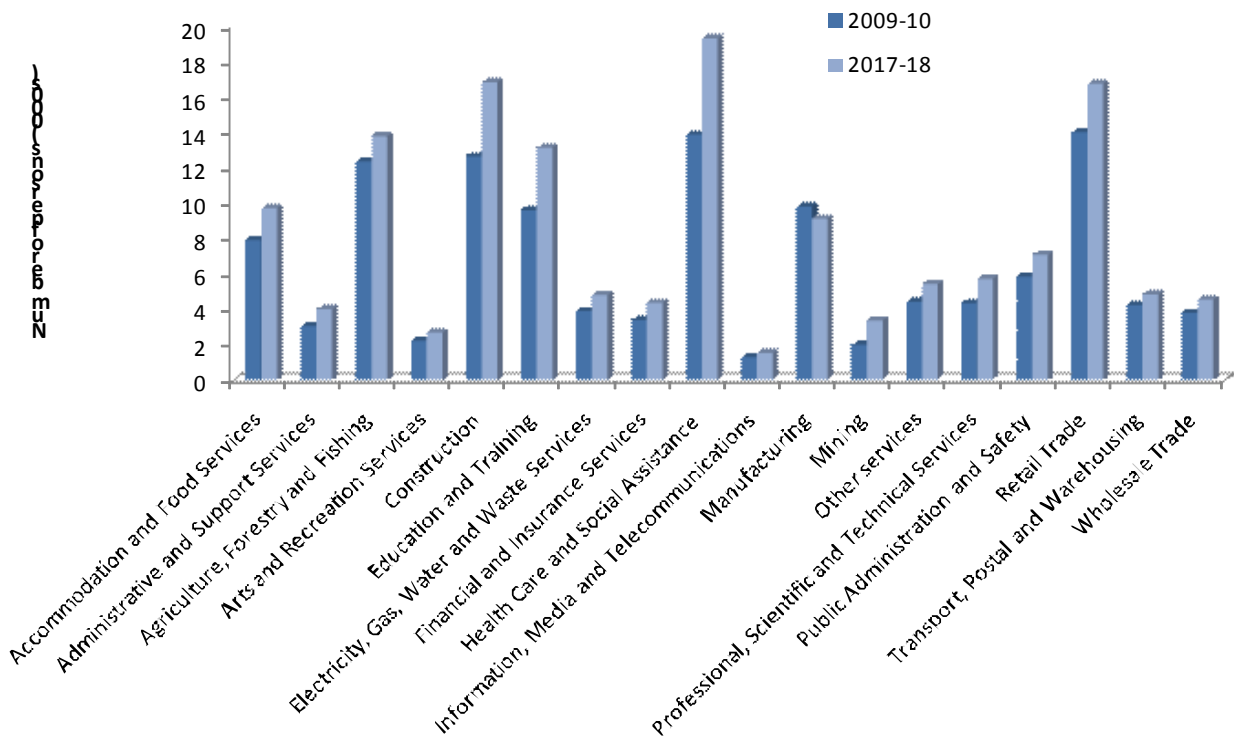


Figure 19: Projected numbers of workers in Gippsland by industry, 2009-10 and 2017-18 ('000s)

Source for both figures on this page: MONASH Model, CoPS, Monash University

**Table 5: Projected numbers of workers in Gippsland by industry, 2009-10 to 2017-18 ('000s)**

	2009-10	2010-11	2011-12	2012-13	2013-14	2014-15	2015-16	2016-17
<b>Accommodation and Food Services</b>	7.89	8.63	9.07	9.4	9.48	9.49	9.55	9.63
<b>Administrative and Support Services</b>	3.05	3.71	3.57	3.67	3.71	3.78	3.85	3.91
<b>Agriculture, Forestry and Fishing</b>	12.34	12.64	12.38	13.19	13.59	13.63	13.78	13.79
<b>Arts and Recreation Services</b>	2.21	2.26	2.51	2.59	2.61	2.62	2.65	2.66
<b>Construction</b>	12.63	14.99	15.4	15.73	16.09	16.34	16.51	16.44
<b>Education and Training</b>	9.58	10.59	11.02	11.45	11.74	12.01	12.34	12.73
<b>Electricity, Gas, Water and Waste Services</b>	3.9	4.86	4.62	4.86	4.87	4.85	4.83	4.83
<b>Financial and Insurance Services</b>	3.39	4.1	3.99	4.02	4.08	4.13	4.2	4.26
<b>Health Care and Social Assistance</b>	13.86	16.56	16.78	17.32	17.65	18	18.41	18.86
<b>Information, Media and Telecommunications</b>	1.3	1.31	1.37	1.45	1.46	1.47	1.47	1.5
<b>Manufacturing</b>	9.78	10.84	10.38	10.18	10.02	9.84	9.64	9.44
<b>Mining</b>	1.99	2.08	2.41	2.89	3	3.17	3.25	3.35
<b>Other services</b>	4.42	5.25	5.06	5.25	5.27	5.29	5.31	5.38
<b>Professional, Scientific and Technical Services</b>	4.34	5.17	5.07	5.25	5.32	5.41	5.5	5.61
<b>Public Administration and Safety</b>	5.83	6.93	6.81	6.89	6.98	6.98	7.03	7.08
<b>Retail Trade</b>	13.99	16.23	15.8	16.07	16.21	16.31	16.41	16.58
<b>Transport, Postal and Warehousing</b>	4.22	4.57	4.68	4.77	4.78	4.76	4.79	4.81
<b>Wholesale Trade</b>	3.78	4.01	4.29	4.34	4.38	4.39	4.44	4.47
<b>Total workforce</b>	118.5	134.73	135.21	139.32	141.24	142.47	143.96	145.33

Source: MONASH Model, CoPS, Monash University

## 5 CONCLUSION

This is the first document in the project being undertaken by ACER for the Expert Panel constructing the Gippsland Tertiary Education Plan for Skills Victoria. It has covered industry, occupational, population profiles of the region as well as providing forecasts for future population and industry in Gippsland. Further detail relating to the analysis presented above can be found in the Appendix to this document.

Subsequent analyses will be based on the analyses of the student cohort in Gippsland and a projection model of student demand for tertiary education in the region.

## APPENDIX

Table 6: Broad occupational categories and distribution, by place of usual residence, 2006

	Baw Baw (S)	Bass Coast (S)	East Gippsland (S)	Latrobe (C)	South Gippsland (S)	Wellington (S)	Gippsland Total	Melbourne	Victoria
<b>Numbers</b>									
<b>Managers (not incl Farm)</b>	1,424	1,143	1,724	2,363	1,013	1,457	9,124	205,774	261,928
<b>Farmers and Farm Managers</b>	1,439	541	1,010	371	1,905	1,736	7,002	4,702	44,393
<b>Professionals</b>	2,683	1,442	2,280	4,023	1,467	2,517	14,412	380,478	472,306
<b>Technicians and Trades Workers</b>	2,638	1,763	2,353	5,468	1,670	2,781	16,673	228,711	319,188
<b>Community and Personal Service Workers</b>	1,456	934	1,589	2,574	857	1,615	9,025	137,087	190,490
<b>Clerical and Administrative Workers</b>	1,853	1,017	1,755	3,948	1,190	1,727	11,490	267,689	337,420
<b>Sales Workers</b>	1,412	1,129	1,623	3,176	934	1,557	9,831	172,419	230,366
<b>Machinery Operators and Drivers</b>	1,281	542	965	2,344	816	1,201	7,149	107,473	149,222
<b>Labourers</b>	2,340	1,284	2,289	3,549	1,444	2,161	13,067	147,272	224,552
<b>Inadequately described</b>	162	85	140	262	90	139	878	19,159	24,257
<b>Total Employed persons</b>	16,688	9,880	15,728	28,078	11,386	16,891	98,651	1,670,764	2,254,122
<b>Percentage distribution</b>									
<b>Managers (not incl Farm)</b>	8.5	11.6	11.0	8.4	8.9	8.6	9.2	12.3	11.6
<b>Farmers and Farm Managers</b>	8.6	5.5	6.4	1.3	16.7	10.3	7.1	0.3	2.0
<b>Professionals</b>	16.1	14.6	14.5	14.3	12.9	14.9	14.6	22.8	21.0
<b>Technicians and Trades Workers</b>	15.8	17.8	15.0	19.5	14.7	16.5	16.9	13.7	14.2
<b>Community and Personal Service Workers</b>	8.7	9.5	10.1	9.2	7.5	9.6	9.1	8.2	8.5
<b>Clerical and Administrative Workers</b>	11.1	10.3	11.2	14.1	10.5	10.2	11.6	16.0	15.0
<b>Sales Workers</b>	8.5	11.4	10.3	11.3	8.2	9.2	10.0	10.3	10.2
<b>Machinery Operators and Drivers</b>	7.7	5.5	6.1	8.3	7.2	7.1	7.2	6.4	6.6
<b>Labourers</b>	14.0	13.0	14.6	12.6	12.7	12.8	13.2	8.8	10.0
<b>Inadequately described</b>	1.0	0.9	0.9	0.9	0.8	0.8	0.9	1.1	1.1
<b>Total Employed persons</b>	100.0	100.0	100.0	100.0	100.0	100.0	100.0	100.0	100.0

Source: ABS Census 2006, unpublished (Table Builder)

**Table 7: Broad industry categories and distribution of employed persons, by place of usual residence, 2006**

	Baw Baw (S)	Bass Coast (S)	East Gippsland (S)	Latrobe (C)	South Gippsland (S)	Wellington (S)	Gippsland Total	Melbourne (S)	Victoria
<b>Numbers</b>									
<b>Agriculture, Forestry and Fishing</b>	1,947	727	1,558	715	2,293	2,363	9,603	9,477	63,712
<b>Mining</b>	119	35	108	308	94	630	1,294	2,852	6,277
<b>Manufacturing</b>	1,618	687	1,348	3,102	1,141	1,336	9,232	217,511	287,109
<b>Electricity, Gas, Water and Waste Services</b>	277	130	176	1,845	172	296	2,896	12,165	20,015
<b>Construction</b>	1,627	1,301	1,500	2,821	942	1,272	9,463	123,136	171,464
<b>Wholesale Trade</b>	820	316	440	702	413	379	3,070	92,906	112,551
<b>Retail Trade</b>	1,732	1,358	2,130	3,950	1,196	2,042	12,408	191,482	263,448
<b>Accommodation and Food Services</b>	798	900	1,378	1,563	623	937	6,199	94,890	131,841
<b>Transport, Postal and Warehousing</b>	654	302	649	878	461	551	3,495	78,991	103,816
<b>Information Media and Telecommunications</b>	208	90	114	374	98	114	998	42,179	49,936
<b>Financial and Insurance Services</b>	305	146	237	659	178	243	1,768	80,509	92,294
<b>Rental, Hiring and Real Estate Services</b>	168	175	192	287	111	157	1,090	24,358	30,776
<b>Professional, Scientific and Technical Services</b>	635	358	469	913	359	495	3,229	139,916	161,616
<b>Administrative and Support Services</b>	398	303	386	882	228	437	2,634	59,723	74,924
<b>Public Administration and Safety</b>	794	410	714	2,009	400	1,338	5,665	83,000	116,970
<b>Education and Training</b>	1,579	734	1,344	2,234	809	1,353	8,053	128,021	174,424
<b>Health Care and Social Assistance</b>	1,775	1,125	1,930	3,192	1,128	1,901	11,051	169,432	236,553
<b>Arts and Recreation Services</b>	170	287	218	256	143	145	1,219	28,459	35,651
<b>Other Services</b>	779	314	553	954	413	564	3,577	61,230	81,643
<b>Inadequately described</b>	169	113	165	287	105	230	1,069	21,523	26,903
<b>Total Employed</b>	16,572	9,811	15,609	27,931	11,307	16,783	98,013	1,661,760	2,241,923
<b>Percentage distribution</b>									

<b>Agriculture, Forestry and Fishing</b>	11.7	7.4	10.0	2.6	20.3	14.1	9.8	0.6	2.8
<b>Mining</b>	0.7	0.4	0.7	1.1	0.8	3.8	1.3	0.2	0.3
<b>Manufacturing</b>	9.8	7.0	8.6	11.1	10.1	8.0	9.4	13.1	12.8
<b>Electricity, Gas, Water and Waste Services</b>	1.7	1.3	1.1	6.6	1.5	1.8	3.0	0.7	0.9
<b>Construction</b>	9.8	13.3	9.6	10.1	8.3	7.6	9.7	7.4	7.6
<b>Wholesale Trade</b>	4.9	3.2	2.8	2.5	3.7	2.3	3.1	5.6	5.0
<b>Retail Trade</b>	10.5	13.8	13.6	14.1	10.6	12.2	12.7	11.5	11.8
<b>Accommodation and Food Services</b>	4.8	9.2	8.8	5.6	5.5	5.6	6.3	5.7	5.9
<b>Transport, Postal and Warehousing</b>	3.9	3.1	4.2	3.1	4.1	3.3	3.6	4.8	4.6
<b>Information Media and Telecommunications</b>	1.3	0.9	0.7	1.3	0.9	0.7	1.0	2.5	2.2
<b>Financial and Insurance Services</b>	1.8	1.5	1.5	2.4	1.6	1.4	1.8	4.8	4.1
<b>Rental, Hiring and Real Estate Services</b>	1.0	1.8	1.2	1.0	1.0	0.9	1.1	1.5	1.4
<b>Professional, Scientific and Technical Services</b>	3.8	3.6	3.0	3.3	3.2	2.9	3.3	8.4	7.2
<b>Administrative and Support Services</b>	2.4	3.1	2.5	3.2	2.0	2.6	2.7	3.6	3.3
<b>Public Administration and Safety</b>	4.8	4.2	4.6	7.2	3.5	8.0	5.8	5.0	5.2
<b>Education and Training</b>	9.5	7.5	8.6	8.0	7.2	8.1	8.2	7.7	7.8
<b>Health Care and Social Assistance</b>	10.7	11.5	12.4	11.4	10.0	11.3	11.3	10.2	10.6
<b>Arts and Recreation Services</b>	1.0	2.9	1.4	0.9	1.3	0.9	1.2	1.7	1.6
<b>Other Services</b>	4.7	3.2	3.5	3.4	3.7	3.4	3.6	3.7	3.6
<b>Inadequately described</b>	1.0	1.2	1.1	1.0	0.9	1.4	1.1	1.3	1.2
<b>Total Employed</b>	100.0	100.0	100.0	100.0	100.0	100.0	100.0	100.0	100.0

Source: ABS Census 2006, unpublished (*Table Builder*)

**Table 8: Weekly income distribution among employed residents aged 20 to 59, Gippsland, Melbourne and Victoria, 2006**

	Bass Coast (S)	Baw Baw (S)	East Gippsland (S)	Latrobe (C)	South Gippsland (S)	Wellington (S)	Gippsland Total	Melbourne	Victoria
<b>Numbers</b>									
<b>Below \$250</b>	2,797	3,792	4,518	8,741	2,750	4,606	27,204	418,003	562,544
<b>\$250 to \$599</b>	4,072	5,711	6,529	10,284	4,020	5,936	36,552	482,482	692,710
<b>\$600 to \$999</b>	2,673	4,468	4,242	7,487	2,955	4,477	26,302	493,244	659,617
<b>\$1,000 to \$1,599</b>	1,271	2,712	1,804	5,295	1,560	2,609	15,251	326,944	417,394
<b>\$1,600 or more</b>	380	952	573	2,235	505	1,227	5,872	171,156	201,335
<b>Total stated</b>	11,193	17,635	17,666	34,042	11,790	18,855	111,181	1,891,829	2,533,600
<b>Percentage distribution</b>									
<b>Below \$250</b>	25.0	21.5	25.6	25.7	23.3	24.4	24.5	22.1	22.2
<b>\$250 to \$599</b>	36.4	32.4	37.0	30.2	34.1	31.5	32.9	25.5	27.3
<b>\$600 to \$999</b>	23.9	25.3	24.0	22.0	25.1	23.7	23.7	26.1	26.0
<b>\$1,000 to \$1,599</b>	11.4	15.4	10.2	15.6	13.2	13.8	13.7	17.3	16.5
<b>\$1,600 or more</b>	3.4	5.4	3.2	6.6	4.3	6.5	5.3	9.0	7.9
<b>Total stated</b>	100.0	100.0	100.0	100.0	100.0	100.0	100.0	100.0	100.0

Source: ABS Census 2006, unpublished (*Table Builder*)

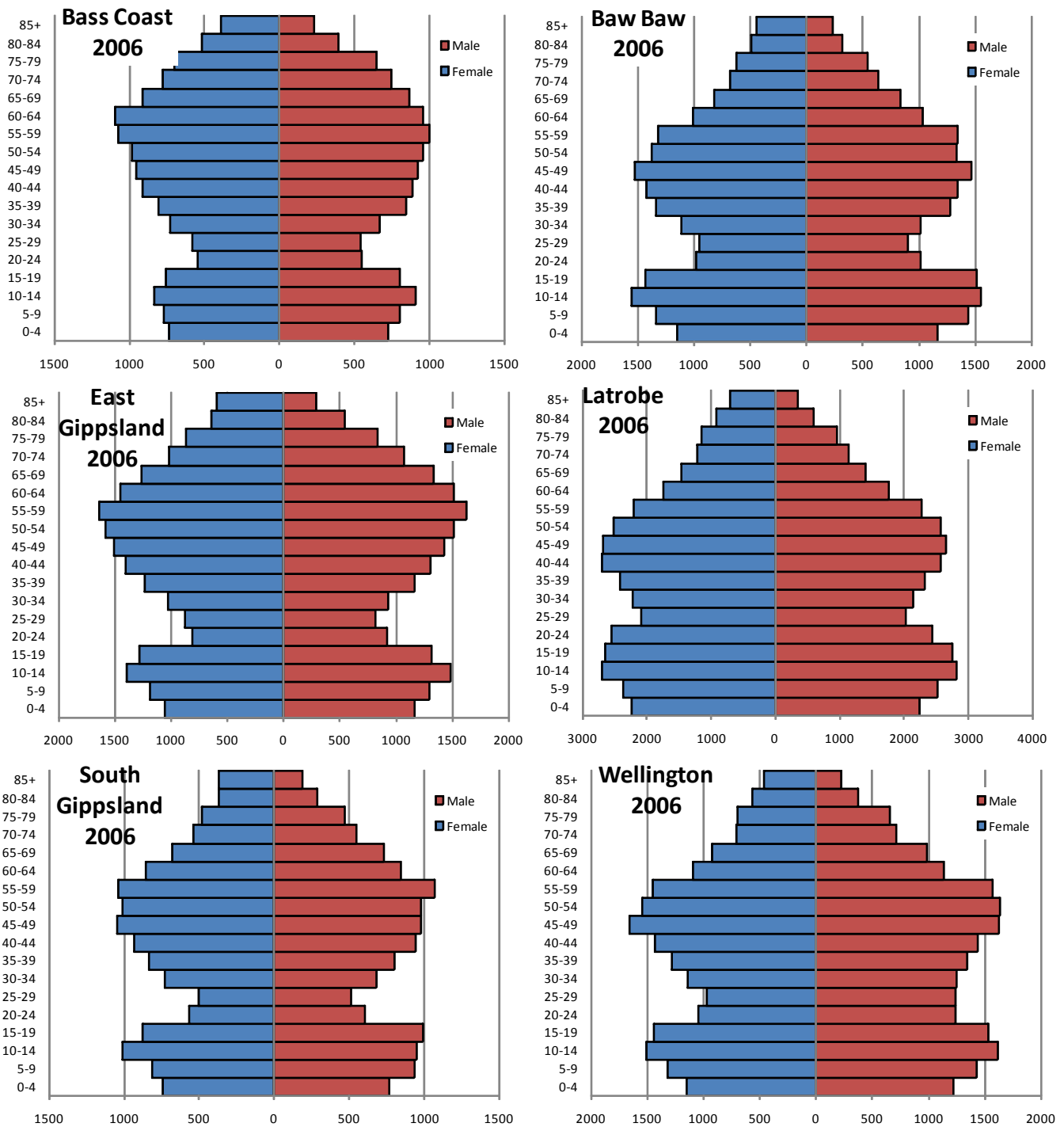
**Table 9: Location of work Statistical Subdivision, by residential location, Gippsland Local Government Areas, 2006**

Statistical Subdivision (SSD) of work	Residential location							Gippsland Total
	Baw Baw (S)	Bass Coast (S)	East Gippsland (S)	Latrobe (C)	South Gippsland (S)	Wellington (S)		
La Trobe Valley	2,696	74	71	23,548	441	1,133	27,963	
South Gippsland	218	7,568	7	197	8,732	76	16,798	
Wellington Shire	33	8	177	622	102	13,595	14,537	
East Gippsland Shire	14	-	13,540	41	6	186	13,787	
West Gippsland	10,019	27	5	580	157	15	10,803	
South Eastern Outer Melbourne	957	272	10	99	261	15	1,614	
Greater Dandenong City	375	181	11	73	136	11	787	
Inner Melbourne	262	156	53	138	105	62	776	
Eastern Middle Melbourne	191	107	17	80	81	27	503	
Southern Melbourne	137	86	15	32	76	24	370	
Eastern Outer Melbourne	90	42	11	21	35	13	212	
Frankston City	32	55	4	13	63	-	167	
Mornington Peninsula Shire	29	34	7	28	48	13	159	
Western Melbourne	24	13	4	28	27	13	109	
Boroondara City	32	30	4	20	16	-	102	
Hopkins	8	3	0	68	3	13	95	
East Ovens-Murray	4	7	52	6	0	6	75	
Yarra Ranges Shire Part A	22	13	3	8	12	9	67	
Glenelg	6	3	3	46	3	4	65	
Northern Middle Melbourne	14	12	4	9	15	10	64	
Melbourne Undefined	14	4	4	17	14	5	58	
Melton-Wyndham	18	7	8	9	3	11	56	
Northern Outer Melbourne	8	7	6	3	7	5	36	



<b>Moreland City</b>	3	7	3	6	4	6	29
<b>Ballarat City</b>	3	4	0	7	0	11	25
<b>Greater Geelong City Part A</b>	0	3	4	12	5	0	24
<b>Hume City</b>	10	4	3	3	0	3	23
<b>Greater Bendigo City Part A</b>	0	5	0	0	0	16	21
<b>South Goulburn</b>	3	3	3	3	4	3	19
<b>South West Goulburn</b>	0	3	6	5	0	5	19
<b>Greater Shepparton City Part A</b>	3	0	0	4	0	4	11
<b>West Central Highlands</b>	3	0	3	3	0	0	9
<b>Wodonga</b>	0	3	3	3	0	0	9
<b>East Central Highlands</b>	4	0	0	4	0	0	8
<b>North Goulburn</b>	0	0	3	0	0	5	8
<b>East Barwon</b>	0	0	0	3	0	3	6
<b>South Wimmera</b>	3	0	3	0	0	0	6
<b>Mildura Rural City Part A</b>	3	0	3	0	0	0	6
<b>East Mallee</b>	0	0	3	3	0	0	6
<b>North Loddon</b>	3	0	0	0	3	0	6
<b>West Barwon</b>	0	0	0	0	0	5	5
<b>South Loddon</b>	0	5	0	0	0	0	5
<b>Warrnambool City</b>	3	0	0	0	0	0	3
<b>North Wimmera</b>	3	0	0	0	0	0	3
<b>West Ovens-Murray</b>	0	3	0	0	0	0	3
<b>West Mallee</b>	0	0	0	0	0	0	0
<b>VIC Undefined</b>	106	57	121	305	67	152	808
<b>VIC Off-Shore Areas &amp; Migratory</b>	4	4	55	38	12	165	278
<b>VIC No fixed address</b>	691	621	773	849	457	604	3,995
<b>Total</b>	16,048	9,431	15,002	26,934	10,895	16,228	94,538





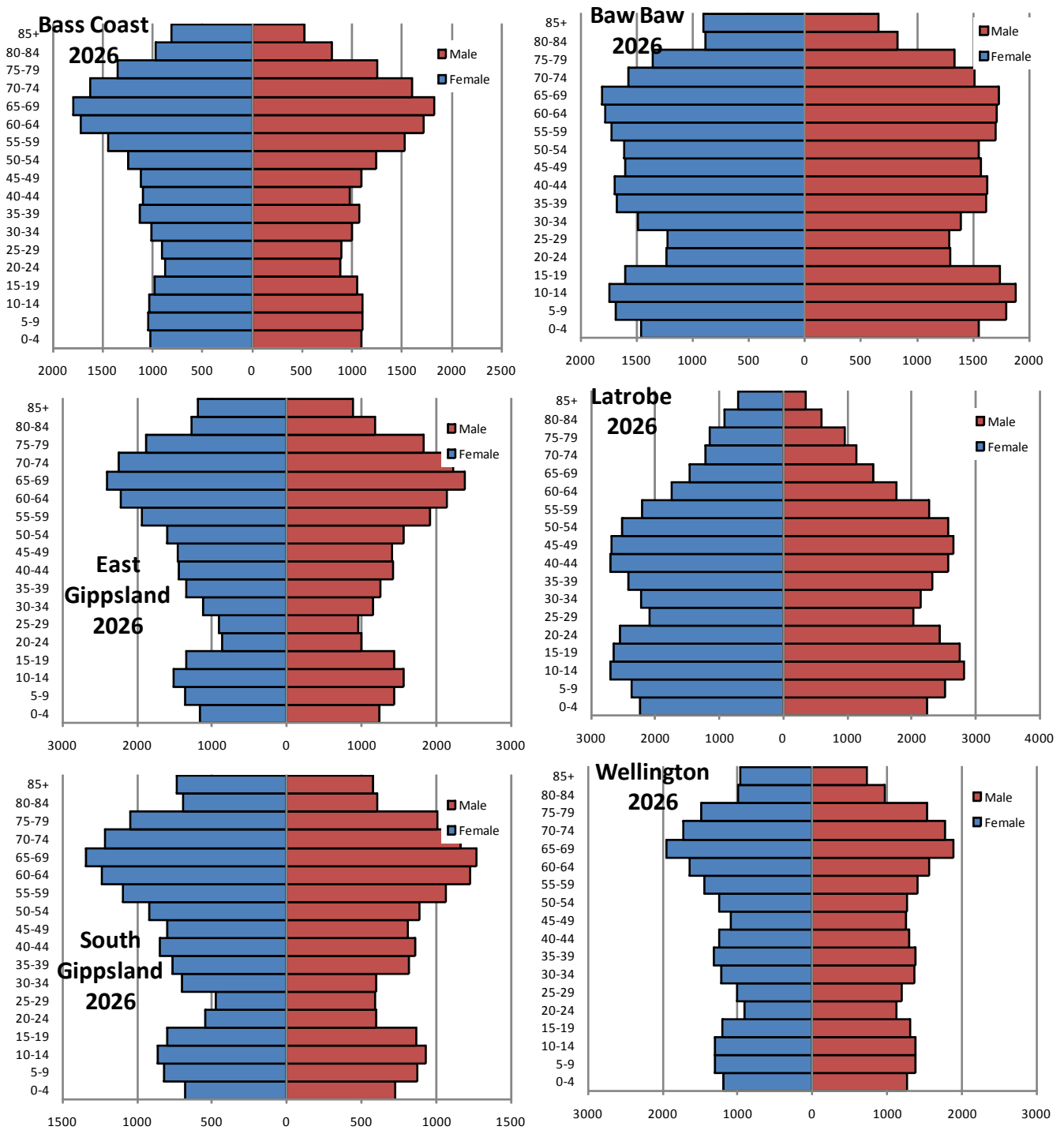
**Figure 20: Population pyramids for Gippsland LGAs, 2006**

Source: Victoria in the Future 2008, Population projections DPCD (amended by ACER)

**Table 10: Total population projections for Gippsland LGAs, Melbourne and Victoria 2006 to 2026**

<b>LGA</b>	<b>2006</b>	<b>2011</b>	<b>2016</b>	<b>2021</b>	<b>2026</b>
<b>Bass Coast (S)</b>	27,524	31,675	34,528	38,203	41,919
<b>Baw Baw (S)</b>	38,484	41,890	45,806	49,712	53,769
<b>East Gippsland (S)</b>	41,361	44,637	47,769	50,997	54,224
<b>Latrobe (C)</b>	72,075	74,591	78,433	81,719	84,612
<b>South Gippsland (S)</b>	26,675	27,545	28,710	29,831	31,024
<b>Wellington (S)</b>	41,591	43,007	44,317	45,762	47,283
<b>Gippsland Total</b>	247,710	263,345	279,563	296,223	312,829
<b>Melbourne</b>	3,744,373	4,082,871	4,396,916	4,704,719	5,000,048
<b>Victoria</b>	5,128,310	5,551,243	5,946,515	6,338,243	6,718,276

Source: Victoria in the Future 2008, Population projections DPCD (amended by ACER)



**Figure 21: Population pyramids for Gippsland LGAs, 2026**

Source: Victoria in the Future 2008, Population projections DPCD (amended by ACER)

**Table 11: Projections of workforce numbers by qualification level, Gippsland SDs and Melbourne, 2009-10 to 2017-18, ('000s)**

SD	ASCED level	2009-10	2010-11	2011-12	2012-13	2013-14	2014-15	2015-16	2016-17	2017-18
<b>East Gippsland SD</b>	Post-graduate degree	1.72	2.16	2.23	2.32	2.38	2.45	2.52	2.57	2.62
	Graduate diploma	1.03	1.27	1.33	1.39	1.44	1.49	1.54	1.59	1.64
	Bachelor degree	6.36	7.81	8.04	8.29	8.46	8.63	8.81	8.94	9.07
	Diploma	3.78	4.63	4.77	4.93	5.05	5.16	5.29	5.38	5.48
	Certificate III or IV	7.54	9.26	9.35	9.58	9.73	9.86	9.99	10.07	10.16
	Certificate I or II	1.61	1.94	1.96	1.99	1.99	2	2	2	1.99
	No post school quals	17.07	20.24	19.97	19.84	19.5	19.12	18.73	18.25	17.77
	<b>East Gippsland SD Total</b>		39.11	47.31	47.65	48.34	48.55	48.71	48.88	48.8
<b>Gippsland SD</b>	Post-graduate degree	3.54	4.04	4.15	4.42	4.61	4.78	4.96	5.15	5.34
	Graduate diploma	2.06	2.31	2.4	2.57	2.7	2.81	2.94	3.08	3.22
	Bachelor degree	13.06	14.61	14.96	15.8	16.37	16.83	17.34	17.91	18.46
	Diploma	7.52	8.39	8.6	9.1	9.46	9.75	10.09	10.45	10.81
	Certificate III or IV	15.65	17.49	17.54	18.39	18.94	19.32	19.76	20.22	20.7
	Certificate I or II	3.24	3.56	3.58	3.71	3.78	3.82	3.87	3.93	3.98
	No post school quals	34.34	37.06	36.37	37.01	36.93	36.5	36.13	35.8	35.42
	<b>Gippsland SD Total</b>		79.41	87.46	87.6	91	92.79	93.81	95.09	96.54
<b>Gippsland Total</b>	Post-graduate degree	5.26	6.2	6.38	6.74	6.99	7.23	7.48	7.72	7.96
	Graduate diploma	3.09	3.58	3.73	3.96	4.14	4.3	4.48	4.67	4.86
	Bachelor degree	19.42	22.42	23	24.09	24.83	25.46	26.15	26.85	27.53
	Diploma	11.3	13.02	13.37	14.03	14.51	14.91	15.38	15.83	16.29
	Certificate III or IV	23.19	26.75	26.89	27.97	28.67	29.18	29.75	30.29	30.86
	Certificate I or II	4.85	5.5	5.54	5.7	5.77	5.82	5.87	5.93	5.97
	No post school quals	51.41	57.3	56.34	56.85	56.43	55.62	54.86	54.05	53.19
	<b>Gippsland Total total</b>		118.52	134.77	135.25	139.34	141.34	142.52	143.97	145.34
<b>Melbourne</b>	Post-graduate degree	130.3	138.8	143.9	151.8	157.6	162.4	167.6	173.1	178
	Graduate diploma	63.1	66.4	69.8	74.1	77.6	80.6	84	87.8	91.2
	Bachelor degree	437.6	457.6	473.7	495.8	511.2	523.1	536.4	551.3	564.1

Diploma	207.6	217.1	225	236.3	244.7	251.5	259.1	267.6	274.9
Certificate III or IV	332.2	346.4	352.2	366.3	375.5	381.9	389	397.1	403.8
Certificate I or II	73.1	75	76.1	78.3	79.4	79.8	80.4	81.2	81.7
No post school quals	785.1	790.2	784.5	791.2	785.3	772.5	761	750.7	737.1
<b>Melbourne Total</b>	2029	2091.5	2125.2	2193.8	2231.3	2251.8	2277.5	2308.8	2330.8

Source: MONASH Model, CoPS, Monash University

